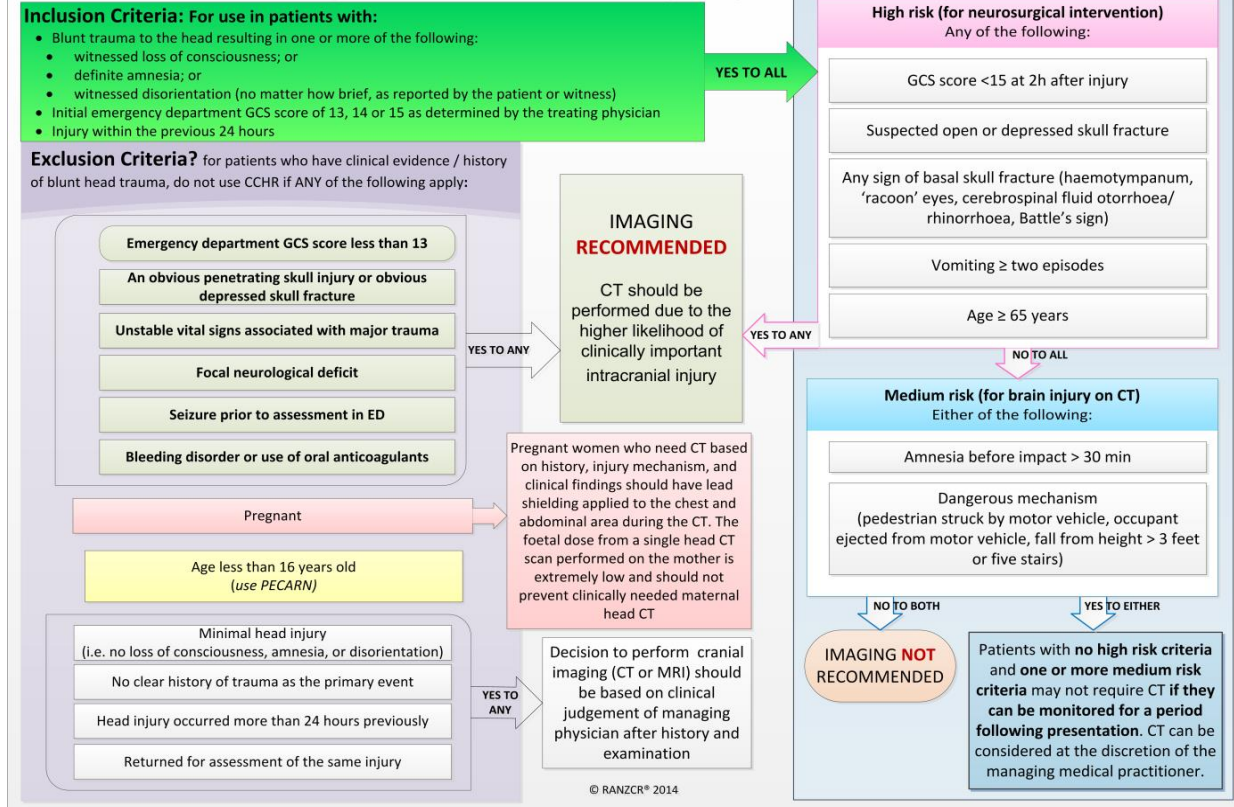


# Canadian CT Head Rule

## Summary Statement:

The Canadian CT Head Rule (CCHR) is a widely validated CDR for use in the emergency department for patients with minor head injury to identify clinically important brain injuries on CT scan that may require neurosurgical intervention. It has 5 high-risk clinical factors that, if any are present, indicate a substantial risk that the patient will require neurosurgical intervention. An additional 2 medium-risk factors can be used to determine if the patient has a risk of clinically important lesions on CT that would not require neurosurgical intervention.

## Using the Canadian CT Head Rule (CCHR):



## Reference:

Stiell IG, Lesiuk H, Wells G, McKnight R, Brison R, Clement C, et al. The Canadian CT Head Rule Study for patients with minor head injury: Rationale, objectives, and methodology for phase I (derivation). *Ann Emerg Med.* 2001; 38(2): 160-9.

This pocket-sized summary is designed to be suitable for printing, lamination, and attachment to a lanyard. Fold on the horizontal dotted line, then the vertical dotted line.